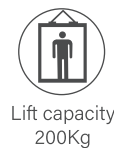
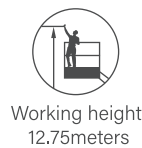


MAST LIFT XGR12J

Comply with CE

Standard configuration

- 2-wheel drive
- Lowering and moving alarm
- Tilt alarm
- Horn with adjustable volume
- Emergency stop of platform and chassis
- 2-wheel braking system
- Proportional self-leveling system
- Proportional joystick control
- Drive enable
- Full time positive traction drive
- Telematics pre-interface
- Anti-extrusion protection device
- Harsh environment kits
- Thumb rocker steering



Optional configuration

- Working light assembly
- Platform air pipe

XGR12J

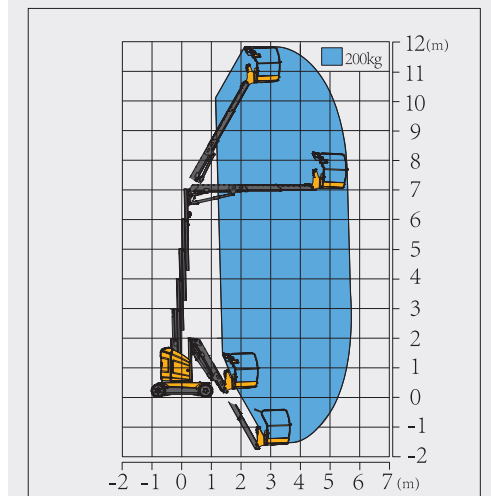
Mast Lift-Electric

Item	Metric	
Dimension	Length	3760mm
	Width	1200mm
	Height	2000mm
Overall dimension - stowed state	Length	3760mm
	Width	1200mm
	Height	2000mm
Overall dimension - transportation	Length	800mm
	Width	1050mm
	Height	1150mm
Platform dimension	Length	1600mm
Fly jib length (fully retracted/fully extended)	1965/4165mm	
Min. ground clearance	90mm	

Performance	
Max. working height	12.75m
Max. platform height	10.75m
Max. working range	5.66m
Max. Up And Over Clearance	7.1m
Max. lift capacity	200kg (unlimited)
Max. number of occupants	2
Max. working slope	X-2.5° / Y-2.5°(front)2.5°(back)
Fly jib luffing range	-60°~60°
Turntable rotation	345°
Platform rotation	/
Total weight	4980kg
Driving speed (stowed)	5.5km/h
Driving speed (raised or extended)	0.6 km/h
Min. turning radius (inside/outside)	1700mm/2750mm (front) 820mm/2020mm (back)
Turntable tailswing (stowed)	130mm
Max. gradeability	25% (14°)

Power source	
Control	48V DC proportional control
Traveling motor	3.3kW/32V
Emergency power supply	/
Main power source - battery	48V/265Ah
Main power source - charger	48V/40A
Hydraulic tank capacity	24L

Tire	
Tire size	457mm×178mm
Tire ground pressure	10.83kg/cm ²
Driving wheels	2
Braking wheels	2
Steering wheels	2



Stowed / Trans

